
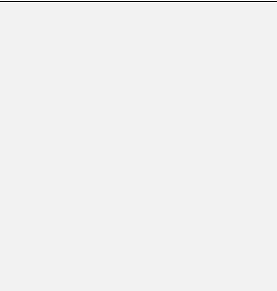

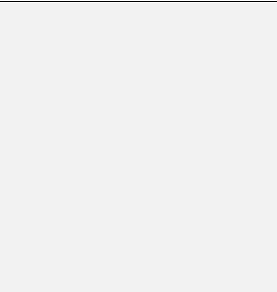


**Archdiocese of St. Louis  
The Reclamation Center  
Item Catalog**

Category		Altar Vessel	
Identification	243		
Category	Altar Vessel		
Description	Bowl		
Size	10"		
Material	Glass		
Color			
Condition	9	<i>Lowest to Highest (1= poor, 10 = Excellent)</i>	
<i>Free will donation, commensurate to fair market value</i>			
Identification	244		
Category	Altar Vessel		
Description	Bowl		
Size	8"		
Material	Glass		
Color			
Condition	9	<i>Lowest to Highest (1= poor, 10 = Excellent)</i>	
<i>Free will donation, commensurate to fair market value</i>			
Identification	252		
Category	Altar Vessel		
Description	Cruet		
Size	5 1/2"		
Material	Glass		
Color			
Condition	7	<i>Lowest to Highest (1= poor, 10 = Excellent)</i>	
<i>Free will donation, commensurate to fair market value</i>			
Identification	1301		
Category	Altar Vessel		
Description	Bowl		
Size	4 1/4" 2 1/2"		
Material	Metal		
Color	Silver		
Condition	10	<i>Lowest to Highest (1= poor, 10 = Excellent)</i>	
<i>Free will donation, commensurate to fair market value</i>			

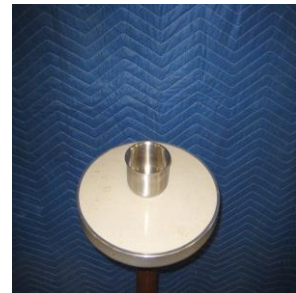
WE THANK YOU FOR YOUR GENEROSITY

Donations can be made payable to: RECLAMATION CENTER Mail Stop 100700 P.O. Box 953745 St. Louis, Mo. 63195-3745

5/1/2024

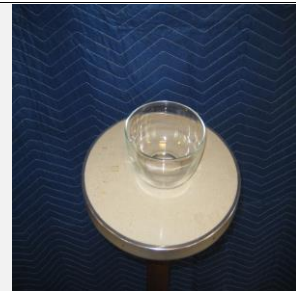
Page 1 of 13

**Identification** 1302  
**Category** Altar Vessel  
**Description** Bowl  
**Size** 3 3/4" x 2 1/2"  
**Material** Metal  
**Color** Silver  
**Condition** 10 *Lowest to Highest (1= poor, 10 = Excellent)*



*Free will donation, commensurate to fair market value*

**Identification** 1408  
**Category** Altar Vessel  
**Description** Finger Bowl  
**Size** 5 3/4" x 2 1/2"  
**Material** Glass  
**Color** Clear  
**Condition** 10 *Lowest to Highest (1= poor, 10 = Excellent)*



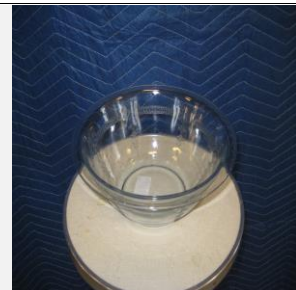
*Free will donation, commensurate to fair market value*

**Identification** 1409  
**Category** Altar Vessel  
**Description** Finger Bowl  
**Size** 5" x 4 3/4"  
**Material** Glass  
**Color** Clear  
**Condition** 6 *Lowest to Highest (1= poor, 10 = Excellent)*



*Free will donation, commensurate to fair market value*

**Identification** 1411  
**Category** Altar Vessel  
**Description** Finger Bowl  
**Size** 10" x 4"  
**Material** Glass  
**Color** Clear  
**Condition** 8 *Lowest to Highest (1= poor, 10 = Excellent)*



*Free will donation, commensurate to fair market value*

WE THANK YOU FOR YOUR GENEROSITY

Donations can be made payable to: RECLAMATION CENTER Mail Stop 100700 P.O. Box 953745 St. Louis, Mo. 63195-3745

5/1/2024

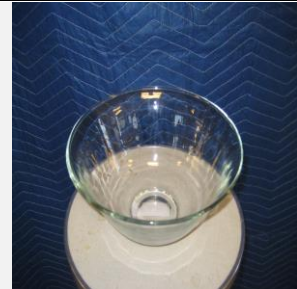
Page 2 of 13

**Identification** 1412  
**Category** Altar Vessel  
**Description** Finger Bowl  
**Size** 7" x 3"  
**Material** Glass  
**Color** Clear  
**Condition** 10 *Lowest to Highest (1= poor, 10 = Excellent)*



*Free will donation, commensurate to fair market value*

**Identification** 1414  
**Category** Altar Vessel  
**Description** Finger Bowl  
**Size** 10" x 4 1/2"  
**Material** Glass  
**Color** Clear  
**Condition** 10 *Lowest to Highest (1= poor, 10 = Excellent)*



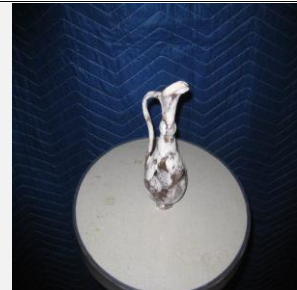
*Free will donation, commensurate to fair market value*

**Identification** 1415  
**Category** Altar Vessel  
**Description** Finger Bowl  
**Size** 9" x 4"  
**Material** Glass  
**Color** Clear  
**Condition** 10 *Lowest to Highest (1= poor, 10 = Excellent)*



*Free will donation, commensurate to fair market value*

**Identification** 1425  
**Category** Altar Vessel  
**Description** Cruets  
**Size** 7" x 2 1/2"  
**Material** Ceramic  
**Color** Black/White  
**Condition** 10 *Lowest to Highest (1= poor, 10 = Excellent)*



*Free will donation, commensurate to fair market value*

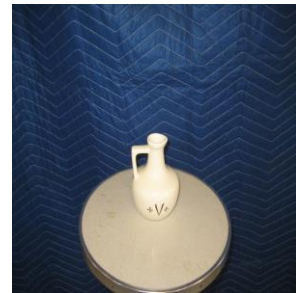
WE THANK YOU FOR YOUR GENEROSITY

Donations can be made payable to: RECLAMATION CENTER Mail Stop 100700 P.O. Box 953745 St. Louis, Mo. 63195-3745

5/1/2024

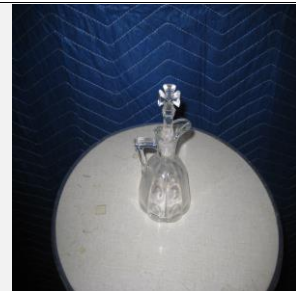
Page 3 of 13

**Identification** 1429  
**Category** Altar Vessel  
**Description** Cruets  
**Size** 5" x 3 1/2"  
**Material** Ceramic  
**Color** White  
**Condition** 10 *Lowest to Highest (1= poor, 10 = Excellent)*



*Free will donation, commensurate to fair market value*

**Identification** 1431  
**Category** Altar Vessel  
**Description** Cruets  
**Size** 5 1/2" x 3"  
**Material** Glass  
**Color** Clear  
**Condition** 8 *Lowest to Highest (1= poor, 10 = Excellent)*



*Free will donation, commensurate to fair market value*

**Identification** 1432  
**Category** Altar Vessel  
**Description** Cruets  
**Size** 3 1/2" x 3"  
**Material** Ceramic  
**Color** Brown  
**Condition** 10 *Lowest to Highest (1= poor, 10 = Excellent)*



*Free will donation, commensurate to fair market value*

**Identification** 1793  
**Category** Altar Vessel  
**Description** Cruet  
**Size** Small  
**Material** Metal  
**Color** Silver  
**Condition** 10 *Lowest to Highest (1= poor, 10 = Excellent)*



*Free will donation, commensurate to fair market value*

WE THANK YOU FOR YOUR GENEROSITY

Donations can be made payable to: RECLAMATION CENTER Mail Stop 100700 P.O. Box 953745 St. Louis, Mo. 63195-3745

5/1/2024

Page 4 of 13

**Identification** 2001  
**Category** Altar Vessel  
**Description** Cruet  
**Size** 6"  
**Material** Metal  
**Color** Silver  
**Condition** 8 *Lowest to Highest (1= poor, 10 = Excellent)*



*Free will donation, commensurate to fair market value*

**Identification** 2323  
**Category** Altar Vessel  
**Description** Saqurium Lid  
**Size**  
**Material** Metal  
**Color** Silver  
**Condition** 10 *Lowest to Highest (1= poor, 10 = Excellent)*



*Free will donation, commensurate to fair market value*

**Identification** 2460  
**Category** Altar Vessel  
**Description** Finger Bowl  
**Size**  
**Material** Metal  
**Color** Silver  
**Condition** 8 *Lowest to Highest (1= poor, 10 = Excellent)*



*Free will donation, commensurate to fair market value*

**Identification** 2647  
**Category** Altar Vessel  
**Description** Hand Wash Bowl  
**Size** Large  
**Material** Metal  
**Color** Silver  
**Condition** 10 *Lowest to Highest (1= poor, 10 = Excellent)*



*Free will donation, commensurate to fair market value*

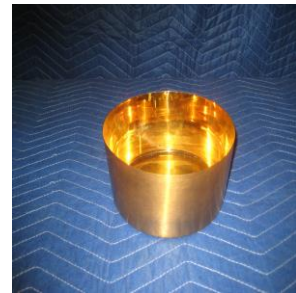
WE THANK YOU FOR YOUR GENEROSITY

Donations can be made payable to: RECLAMATION CENTER Mail Stop 100700 P.O. Box 953745 St. Louis, Mo. 63195-3745

5/1/2024

Page 5 of 13

**Identification** 2648  
**Category** Altar Vessel  
**Description** Hand Wash Bowl  
**Size** Large  
**Material** Metal  
**Color** Brass  
**Condition** 10 *Lowest to Highest (1= poor, 10 = Excellent)*



*Free will donation, commensurate to fair market value*

**Identification** 2844  
**Category** Altar Vessel  
**Description** Bowl & Cruet set  
**Size** Various  
**Material** Ceramic  
**Color** Mixed Color  
**Condition** 10 *Lowest to Highest (1= poor, 10 = Excellent)*



*Free will donation, commensurate to fair market value*

**Identification** 2857  
**Category** Altar Vessel  
**Description** Cruet  
**Size** Small  
**Material** Glass  
**Color** Clear  
**Condition** 8 *Lowest to Highest (1= poor, 10 = Excellent)*



*Free will donation, commensurate to fair market value*

**Identification** 2860  
**Category** Altar Vessel  
**Description** Cruet  
**Size** Small  
**Material** Glass  
**Color** Clear  
**Condition** 10 *Lowest to Highest (1= poor, 10 = Excellent)*



*Free will donation, commensurate to fair market value*

WE THANK YOU FOR YOUR GENEROSITY

Donations can be made payable to: RECLAMATION CENTER Mail Stop 100700 P.O. Box 953745 St. Louis, Mo. 63195-3745

5/1/2024

**Identification** 2861  
**Category** Altar Vessel  
**Description** Cruet  
**Size** Medium  
**Material** Ceramic  
**Color** Mixed Color  
**Condition** 10 *Lowest to Highest (1= poor, 10 = Excellent)*



*Free will donation, commensurate to fair market value*

**Identification** 2862  
**Category** Altar Vessel  
**Description** Pitcher  
**Size** 9 1/2"  
**Material** Metal  
**Color** Silver  
**Condition** 10 *Lowest to Highest (1= poor, 10 = Excellent)*



*Free will donation, commensurate to fair market value*

**Identification** 3149  
**Category** Altar Vessel  
**Description** Water Pitcher  
**Size** Medium  
**Material** Glass  
**Color** Clear  
**Condition** 10 *Lowest to Highest (1= poor, 10 = Excellent)*



*Free will donation, commensurate to fair market value*

**Identification** 3151  
**Category** Altar Vessel  
**Description** Water Pitcher  
**Size** Medium  
**Material** Glass  
**Color** Clear  
**Condition** 10 *Lowest to Highest (1= poor, 10 = Excellent)*



*Free will donation, commensurate to fair market value*

WE THANK YOU FOR YOUR GENEROSITY

Donations can be made payable to: RECLAMATION CENTER Mail Stop 100700 P.O. Box 953745 St. Louis, Mo. 63195-3745

5/1/2024

Page 7 of 13

**Identification** 3380  
**Category** Altar Vessel  
**Description** Cruet  
**Size** 2"  
**Material** Glass  
**Color** Clear  
**Condition** 10 *Lowest to Highest (1= poor, 10 = Excellent)*



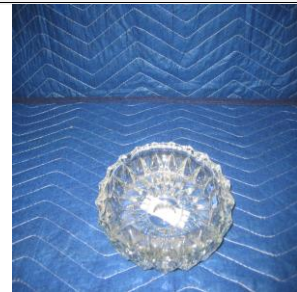
*Free will donation, commensurate to fair market value*

**Identification** 3847  
**Category** Altar Vessel  
**Description** Bowl  
**Size** 7" x 3"  
**Material** Metal  
**Color** Silver  
**Condition** 9 *Lowest to Highest (1= poor, 10 = Excellent)*



*Free will donation, commensurate to fair market value*

**Identification** 3999  
**Category** Altar Vessel  
**Description** Bowl  
**Size** 7"  
**Material** Glass  
**Color** Clear  
**Condition** 10 *Lowest to Highest (1= poor, 10 = Excellent)*



*Free will donation, commensurate to fair market value*

**Identification** 4000  
**Category** Altar Vessel  
**Description** Plate  
**Size** 7 1/2"  
**Material** Glass  
**Color** Clear  
**Condition** 10 *Lowest to Highest (1= poor, 10 = Excellent)*



*Free will donation, commensurate to fair market value*

WE THANK YOU FOR YOUR GENEROSITY

Donations can be made payable to: RECLAMATION CENTER Mail Stop 100700 P.O. Box 953745 St. Louis, Mo. 63195-3745

5/1/2024

Page 8 of 13

**Identification** 4005  
**Category** Altar Vessel  
**Description** Pitcher  
**Size** 6 1/2"  
**Material** Glass  
**Color** Clear  
**Condition** 10 *Lowest to Highest (1= poor, 10 = Excellent)*



*Free will donation, commensurate to fair market value*

**Identification** 4094  
**Category** Altar Vessel  
**Description** Pitcher  
**Size** 7"  
**Material** Glass  
**Color** Clear  
**Condition** 10 *Lowest to Highest (1= poor, 10 = Excellent)*



*Free will donation, commensurate to fair market value*

**Identification** 5586  
**Category** Altar Vessel  
**Description** Cruet  
**Size**  
**Material** Glass  
**Color** Clear  
**Condition** 9 *Lowest to Highest (1= poor, 10 = Excellent)*



*Free will donation, commensurate to fair market value*

**Identification** 5588  
**Category** Altar Vessel  
**Description** Cruet  
**Size**  
**Material** Glass  
**Color** Clear  
**Condition** 9 *Lowest to Highest (1= poor, 10 = Excellent)*



*Free will donation, commensurate to fair market value*

WE THANK YOU FOR YOUR GENEROSITY

Donations can be made payable to: RECLAMATION CENTER Mail Stop 100700 P.O. Box 953745 St. Louis, Mo. 63195-3745

5/1/2024

Page 9 of 13

**Identification** 6055  
**Category** Altar Vessel  
**Description** Cruet  
**Size**  
**Material** Glass  
**Color** Clear  
**Condition** 10 *Lowest to Highest (1= poor, 10 = Excellent)*



*Free will donation, commensurate to fair market value*

**Identification** 6098  
**Category** Altar Vessel  
**Description** Glass Plate  
**Size** 8"  
**Material** Glass  
**Color** Clear  
**Condition** 10 *Lowest to Highest (1= poor, 10 = Excellent)*



*Free will donation, commensurate to fair market value*

**Identification** 6180  
**Category** Altar Vessel  
**Description** Bowl  
**Size**  
**Material** Ceramic  
**Color** White  
**Condition** 7 *Lowest to Highest (1= poor, 10 = Excellent)*



*Free will donation, commensurate to fair market value*

**Identification** 6181  
**Category** Altar Vessel  
**Description** Bowl  
**Size**  
**Material** Glass  
**Color** Clear  
**Condition** 10 *Lowest to Highest (1= poor, 10 = Excellent)*



*Free will donation, commensurate to fair market value*

WE THANK YOU FOR YOUR GENEROSITY

Donations can be made payable to: RECLAMATION CENTER Mail Stop 100700 P.O. Box 953745 St. Louis, Mo. 63195-3745

5/1/2024

Page 10 of 13

**Identification** 6182  
**Category** Altar Vessel  
**Description** Cruet  
**Size** Small  
**Material** Glass  
**Color** Clear  
**Condition** 9 *Lowest to Highest (1= poor, 10 = Excellent)*



*Free will donation, commensurate to fair market value*

**Identification** 6184  
**Category** Altar Vessel  
**Description** Cruet  
**Size** Small  
**Material** Glass  
**Color** Clear  
**Condition** 9 *Lowest to Highest (1= poor, 10 = Excellent)*



*Free will donation, commensurate to fair market value*

**Identification** 6185  
**Category** Altar Vessel  
**Description** Cruet  
**Size** Large  
**Material** Glass  
**Color** Clear  
**Condition** 10 *Lowest to Highest (1= poor, 10 = Excellent)*



*Free will donation, commensurate to fair market value*

**Identification** 6186  
**Category** Altar Vessel  
**Description** Cruet  
**Size** Large  
**Material** Glass  
**Color** Clear  
**Condition** 10 *Lowest to Highest (1= poor, 10 = Excellent)*



*Free will donation, commensurate to fair market value*

WE THANK YOU FOR YOUR GENEROSITY

Donations can be made payable to: RECLAMATION CENTER Mail Stop 100700 P.O. Box 953745 St. Louis, Mo. 63195-3745

5/1/2024

Page 11 of 13

**Identification** 6204  
**Category** Altar Vessel  
**Description** Wash Bowl  
**Size** Large  
**Material** Metal  
**Color** Gold  
**Condition** 9 *Lowest to Highest (1= poor, 10 = Excellent)*



*Free will donation, commensurate to fair market value*

**Identification** 6305  
**Category** Altar Vessel  
**Description** Cruet  
**Size**  
**Material** Metal  
**Color** Silver  
**Condition** 10 *Lowest to Highest (1= poor, 10 = Excellent)*



*Free will donation, commensurate to fair market value*

**Identification** 6309  
**Category** Altar Vessel  
**Description** Communion Cup  
**Size**  
**Material** Metal  
**Color** Silver  
**Condition** 9 *Lowest to Highest (1= poor, 10 = Excellent)*



*Free will donation, commensurate to fair market value*

**Identification** 6310  
**Category** Altar Vessel  
**Description** Communion Cup  
**Size**  
**Material** Metal  
**Color** Gold  
**Condition** 8 *Lowest to Highest (1= poor, 10 = Excellent)*



*Free will donation, commensurate to fair market value*

WE THANK YOU FOR YOUR GENEROSITY

Donations can be made payable to: RECLAMATION CENTER Mail Stop 100700 P.O. Box 953745 St. Louis, Mo. 63195-3745

5/1/2024

Page 12 of 13

**Identification** 6311  
**Category** Altar Vessel  
**Description** Communion Cup  
**Size**  
**Material** Metal  
**Color** Gold  
**Condition** 10

*Lowest to Highest (1= poor, 10 = Excellent)*



*Free will donation, commensurate to fair market value*

---

WE THANK YOU FOR YOUR GENEROSITY

Donations can be made payable to: RECLAMATION CENTER Mail Stop 100700 P.O. Box 953745 St. Louis, Mo. 63195-3745

5/1/2024